

JOKER

JK15WA

1000 W
15" COMPACT ACTIVE
SUBWOOFER

Joker



JK15WA

Compact but powerful!
15" woofer with 4" voice coil delivering
deep and precise bass.



Horn loaded
BAND PASS
design



Multiple
PRESETS
available

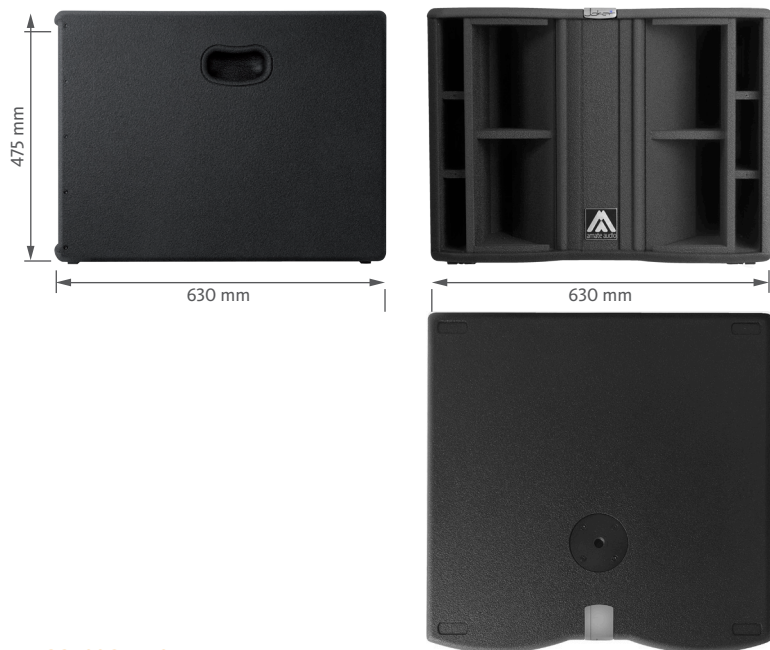
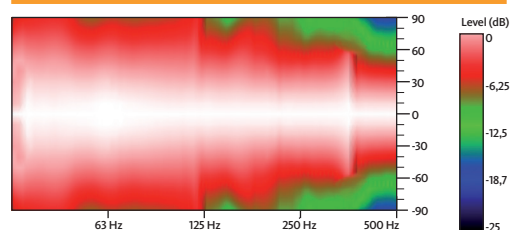
TECHNICAL FEATURES

Amplifier (program power)	1000 W Class D
Input sensitivity	2 dBu – 1 V
Input Impedance	20 kΩ Balanced
Maximum input level	20 dBu
Mains	Universal Switching Power Supply 85-265 V/45-65 Hz
Average current draw	1 A (Heavy duty musical program)
SPL (1 m)	127 dB continuous 130 dB peak
Built-in DSP	48 bit
Presets	XOPOLE / LPF90 / LPF90+3 / LPF100 / LPF100+3 / LPF120 / LPF120+3
AD/DA converters	24 bit – 48 kHz
Standby mode consumption	< 5 W
Adjustable Delay line	118 ms / 40 m
Frequency response (-10 dB)	36 Hz – 90/100/120 Hz
Components LF	15" woofer (4" voice coil)
Directivity (HxV)	omnidirectional
Dimensions (HxWxD)	475 x 630 x 630 mm
Weight	41.6 kg
Finish	Multilayer plywood 1.5 mm optimized steel grille with foam High resistant bi-component black Polyurea® coating

FREQUENCY RESPONSE 1W/1m (LPF100+3 PRESET)

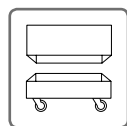


HORIZONTAL & VERTICAL COVERAGE

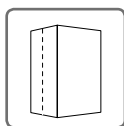


REAR VIEW

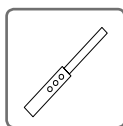
ACCESSORIES



FC-JK15W



NC-JK15W



SP/CRTL