

JK18WA1 18" 1000W ACTIVE SUBWOOFER

Joker



JK18WA1

Get ready to be surprised!
A smart subwoofer design with 1000 W power handling
will tune you in with the music.

JK18WA1 18" 1000W ACTIVE SUBWOOFER



1000 or 2000 W
version available



Horn loaded
BAND PASS
design

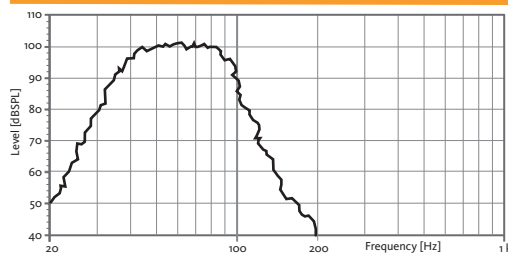


Multiple
PRESETS
available

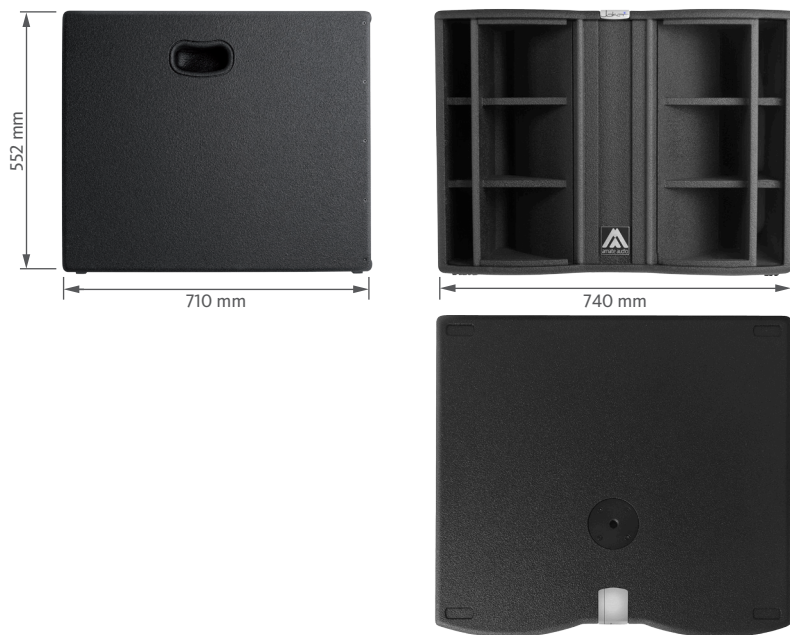
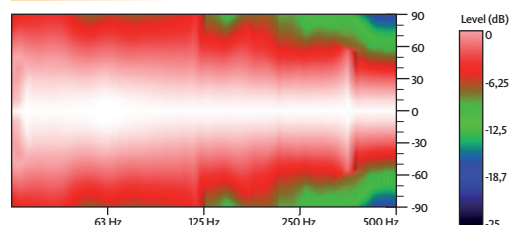
TECHNICAL FEATURES

Amplifier (program power)	1000 W Class D
Input sensitivity	2 dBu – 1 V
Input Impedance	20 kΩ
Maximum input level	20 dBu
Mains	Universal Switching Power Supply 85-265V/45-65 Hz
Average current draw	1 A (Heavy duty musical program)
SPL (1 m)	128 dB continuous 131 dB peak
Built-in DSP	48 bit (including 7 factory presets)
Presets	XOPOLE / LPF90 / LPF90+3 / LPF100 / LPF100+3 / LPF110 / LPF110+3
AD/DA converters	24 bit-48 kHz
Standby mode consumption	< 5 W
Adjustable Delay line	118 ms / 40 m
Frequency response (-10 dB)	32 Hz – 90/100/110 Hz
Components LF	18" woofer (4" voice coil)
Directivity (HxV)	omnidirectional
Dimensions (HxWxD)	552 x 740 x 710 mm
Weight	50.9 kg
Finish	Multilayer plywood 1.5 mm optimized steel grille with foam High resistant bi-component black Polyurea® coating

FREQUENCY RESPONSE 1W/1m (LPF100+3 PRESET)

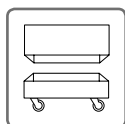


HORIZONTAL & VERTICAL COVERAGE

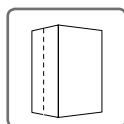


REAR VIEW

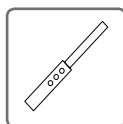
ACCESSORIES



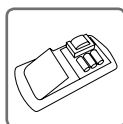
FC-JK18W



NC-JK18W



SP/CRTL



LPF-12