



[www.amateaudio.com](http://www.amateaudio.com)

# **User's manual** ***Manual de usuario***

## **SP-6N**

Wall-mount bracket for N6P, S6P, S6, S26P, S26 and G7  
*Soporte colgado para pared para N6P, S6P, S6, S26P, S26 y G7*

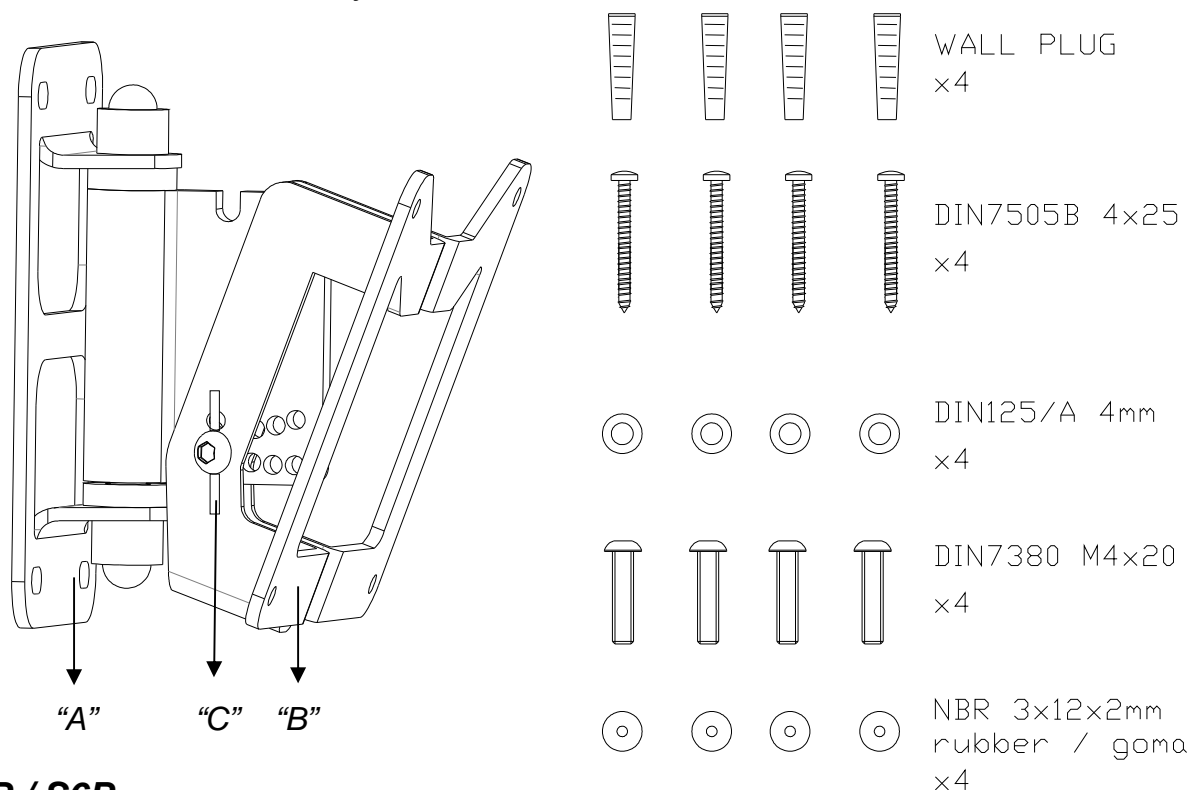
May 2023

Amate Audio S.L.

EXPORT & CUSTOMER SERVICE  
Perpinyà, 25 · Polígon Industrial Nord  
08226 Terrassa · Barcelona – SPAIN  
T. +34 93 735 65 65  
[export@amateaudio.com](mailto:export@amateaudio.com)

R&D, FACTORY AND MANAGEMENT  
Violinista Vellsolà, 18  
08222 Terrassa · Barcelona – SPAIN  
T. +34 93 736 23 90  
[info@amateaudio.com](mailto:info@amateaudio.com)

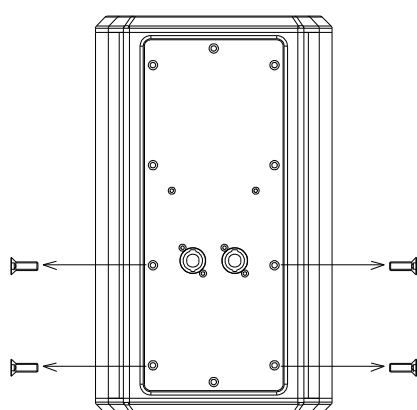
- The SP-6N is an optional accessory for wall mounting (vertical orientation) of the N6P, S6P, S6, S26, S26P and G7.
- ~ El SP-6N es un accesorio opcional para el colgado en pared (vertical) de la N6P, S6P, S6, S26, S26P y de la G7.



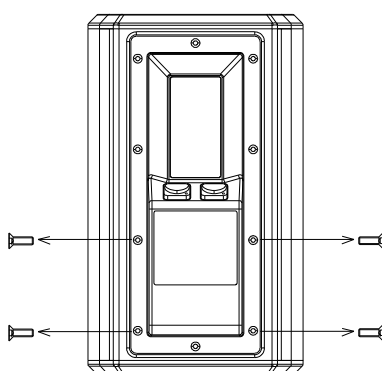
## N6P / S6P

- Remove the four screws placed on the back plate.
- ~ Quitar los cuatro tornillos del panel trasero

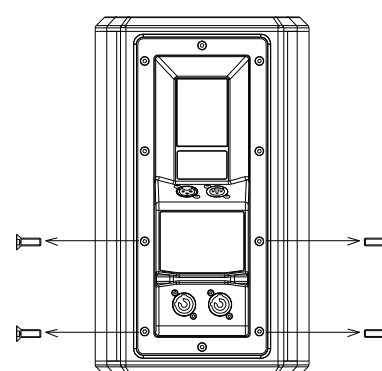
### N6P



### S6P

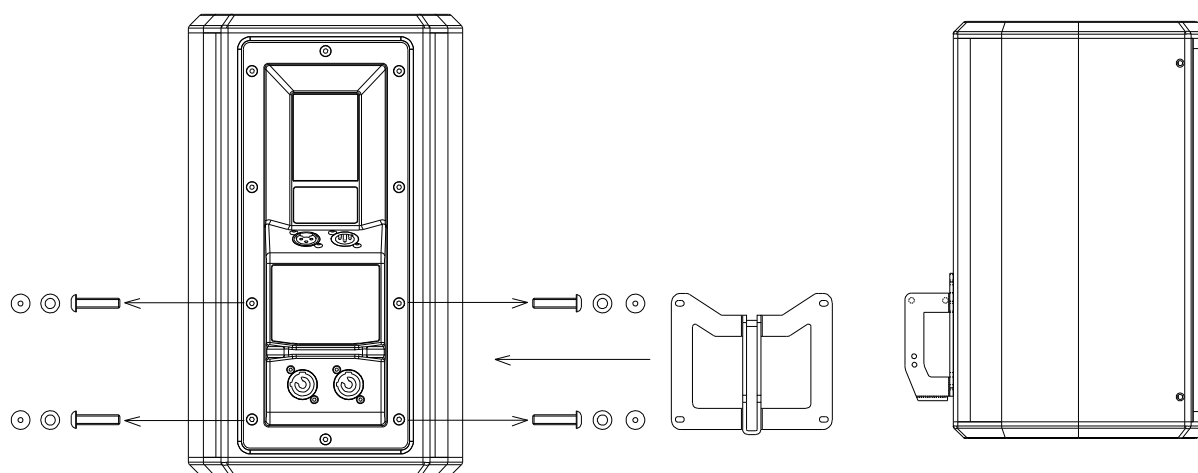
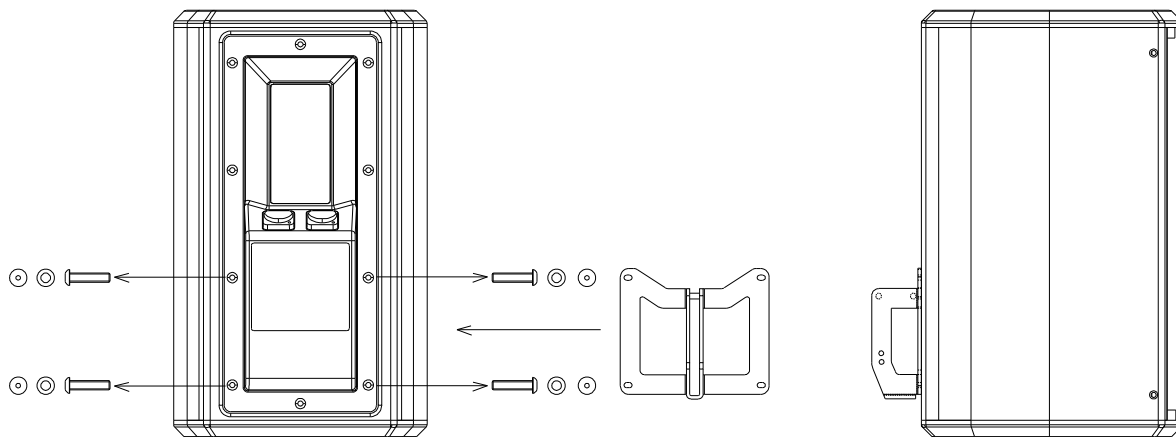
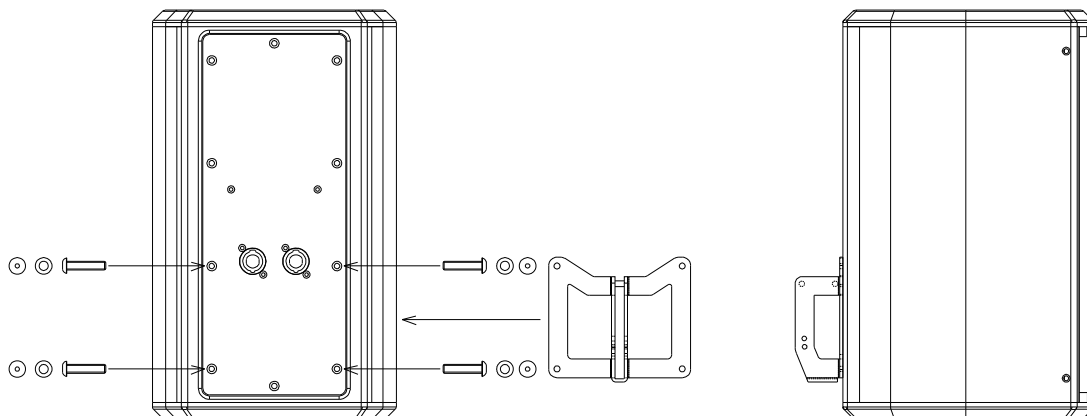


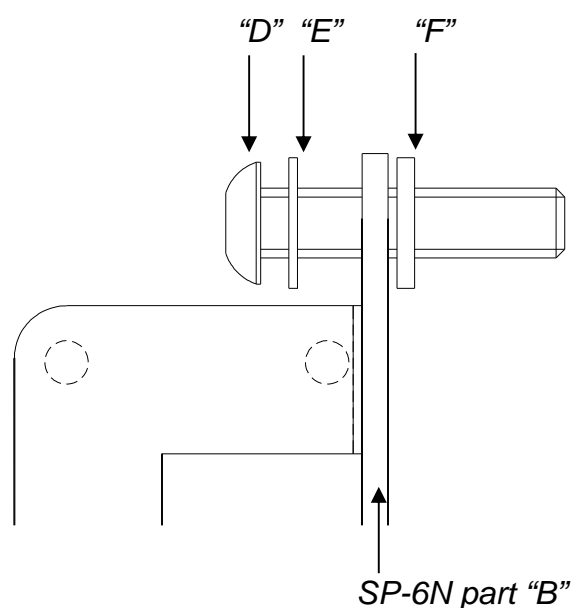
### S6



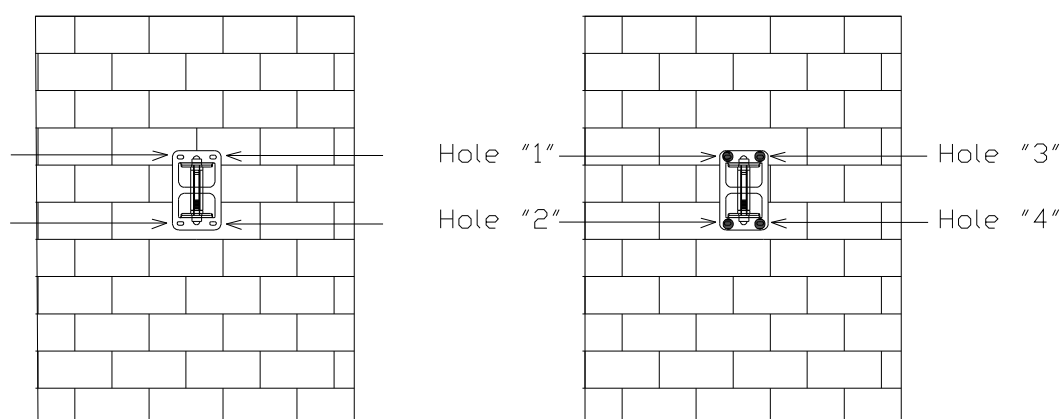
- Fix the part "B" of the SP-6N bracket using the four DIN7380 M4x20 screws ("D"), the four 4mm washers ("E") and the four rubber washers (3x12x2mm) ("F") that you will find in the kit.

~ Fijar la parte "B" del soporte SP-6N a la caja de madera mediante los cuatro tornillos DIN7380 M4x20 ("D"), las cuatro arandelas de 4mm ("E") y las cuatro arandelas de goma (3x12x2mm) ("F") suministradas en el "kit".

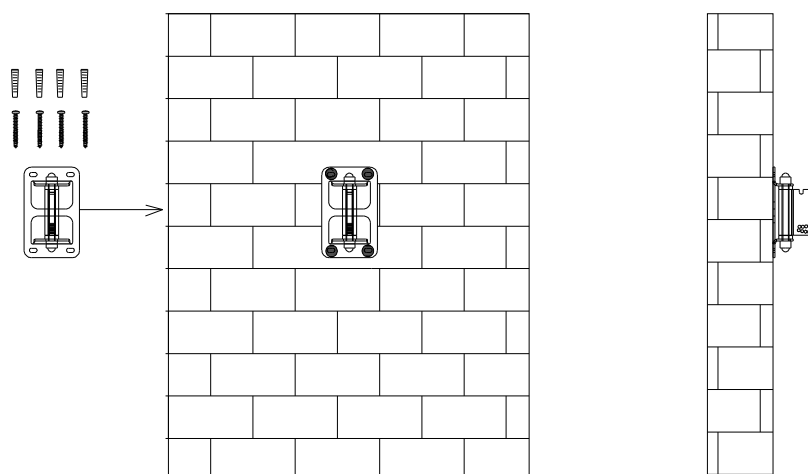




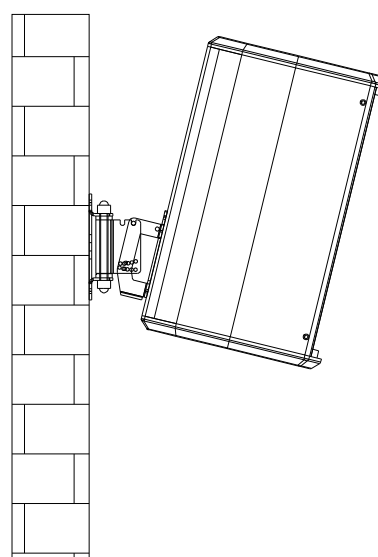
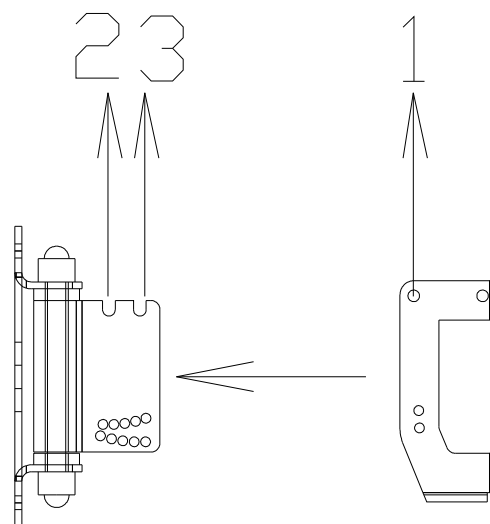
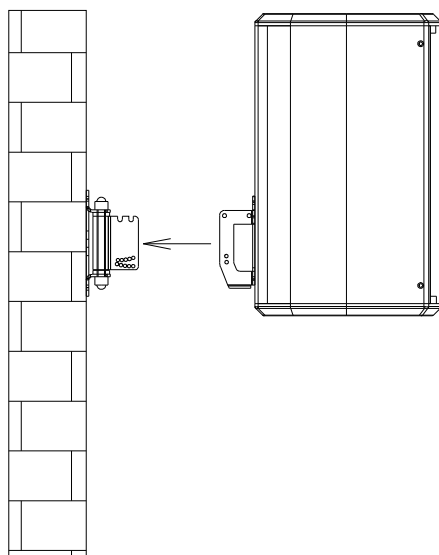
- Place the SP-6N bracket (part "A") in front of the mounting surface, so you can mark the locations of the four mounting holes.
- ~ *Sitúe la parte "A" del soporte SP-6N cerca de la pared donde vaya a colgar la caja y marque la localización de los cuatro puntos de soporte.*



- Drill some corresponding pilot holes on the wall and fix the bracket using the wall plugs and the four DIN7505B 4x25 screws that you will find in the kit.
- ~ *Realice los taladros en la pared y cuelgue el soporte con tornillería adecuada y de alta resistencia (tacos y tornillos DIN7505B 4x25 suministrados en el "kit").*

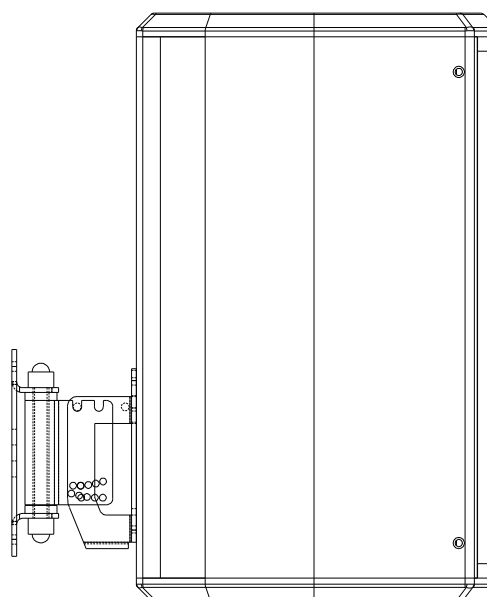
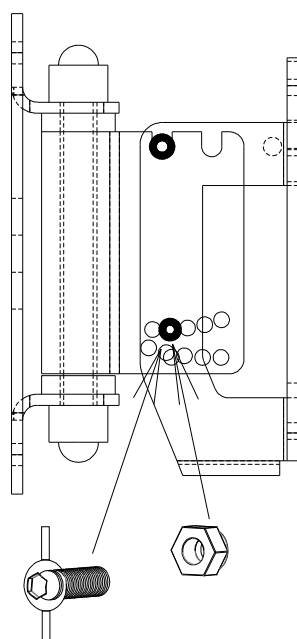


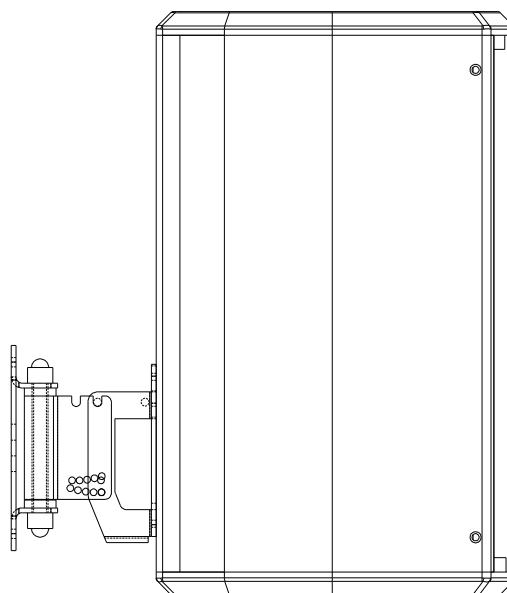
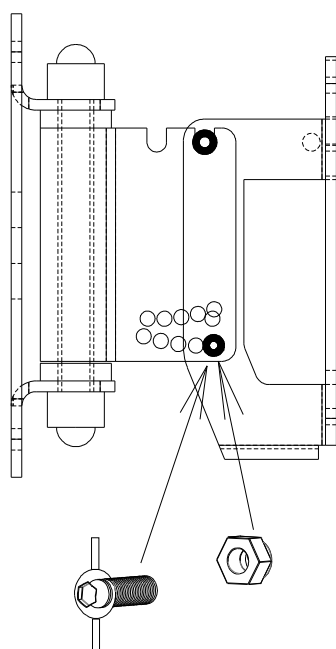
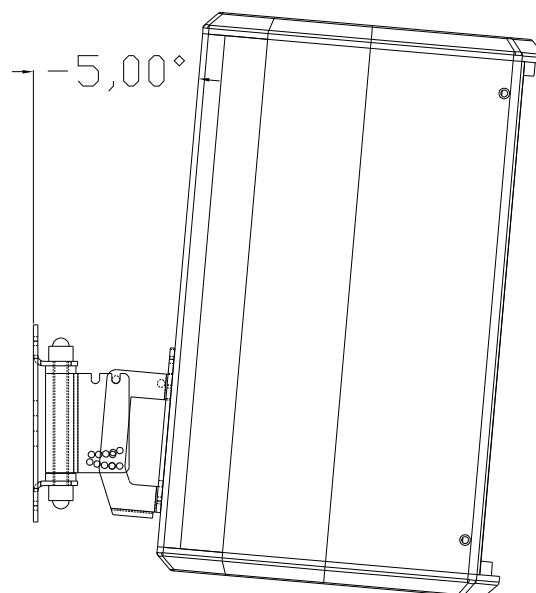
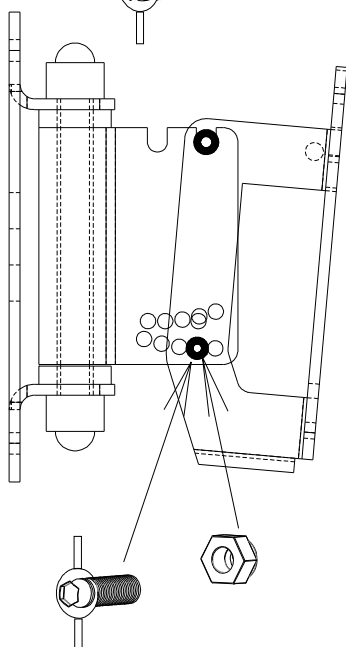
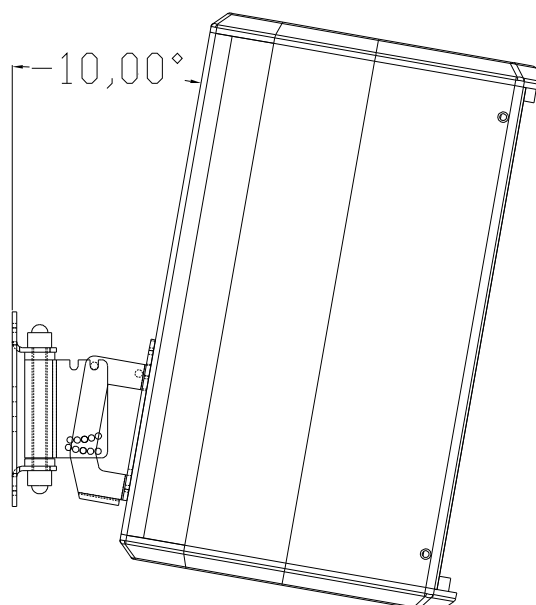
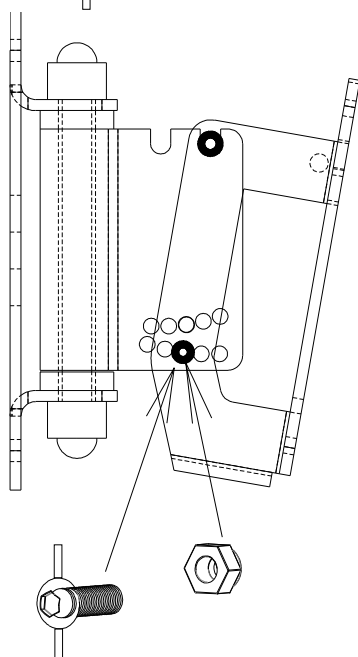
- Join the two parts of the bracket (A & B), placing the point “1” to “2” or “3” position (depending on the desired angle of inclination).
- ~ *Una las dos partes del soporte (A y B), colocando el punto “1” en la posición “2” o “3” (dependiendo del ángulo de inclinación deseado).*

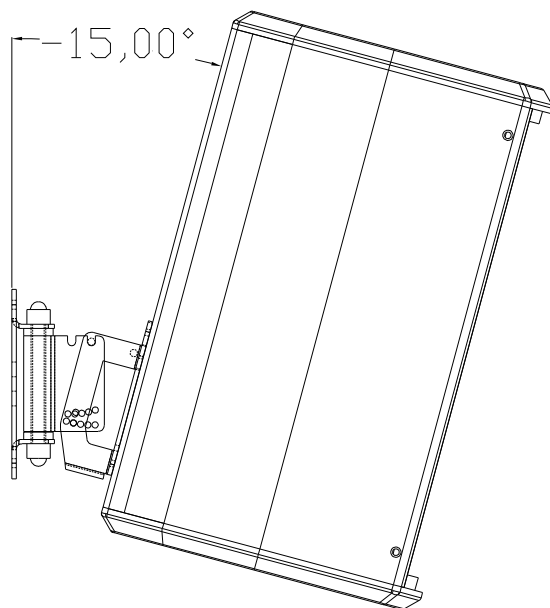
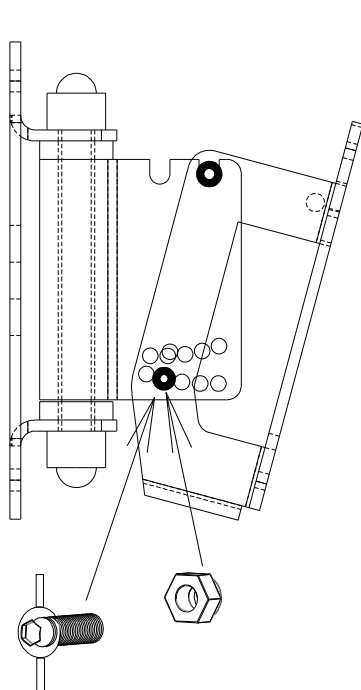
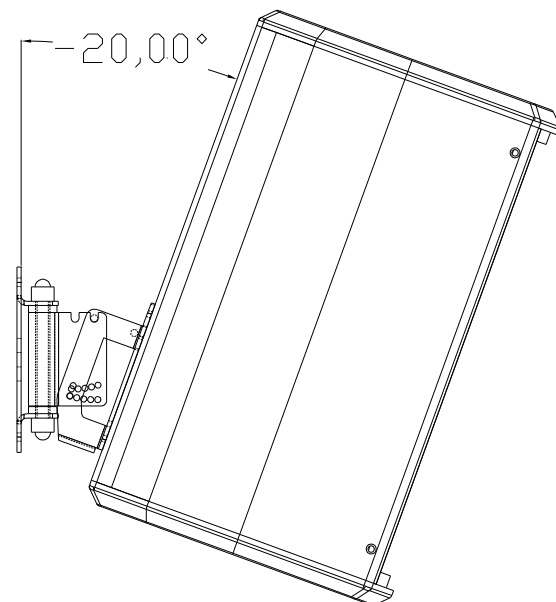
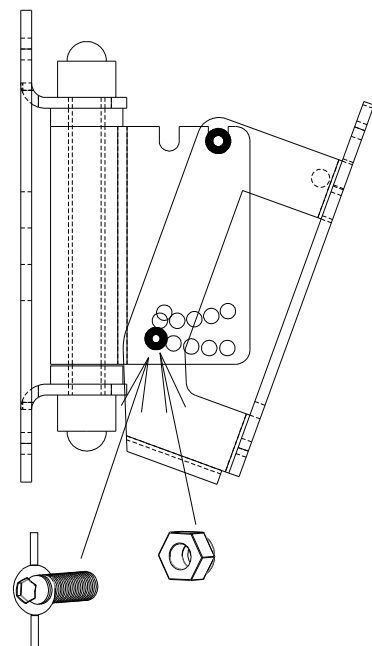
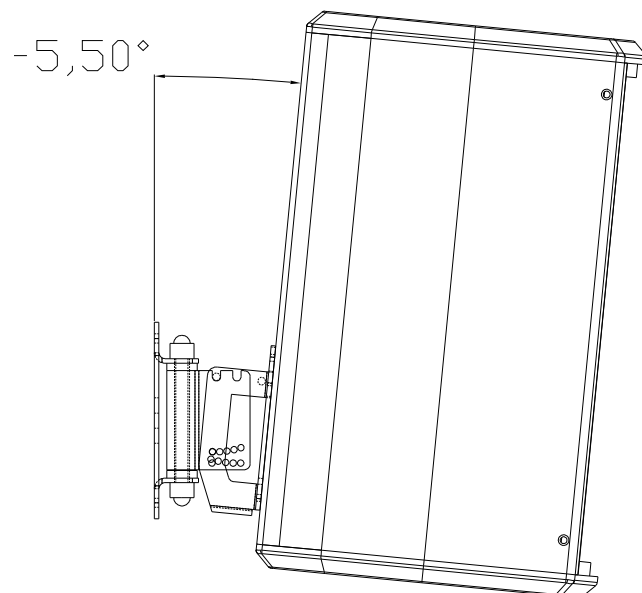
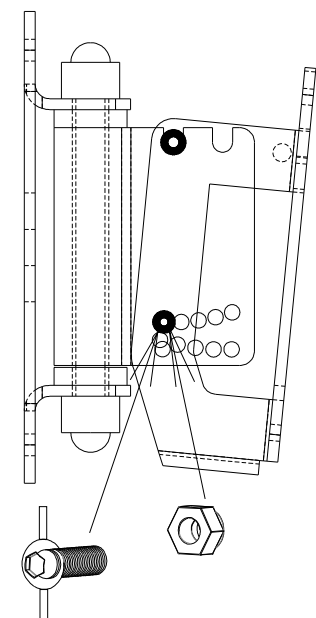


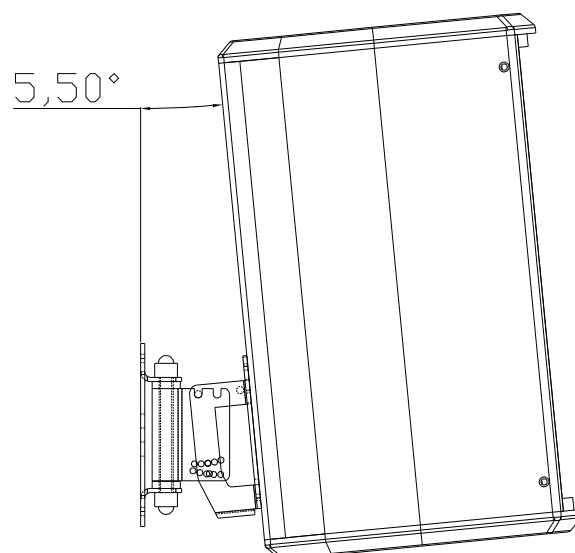
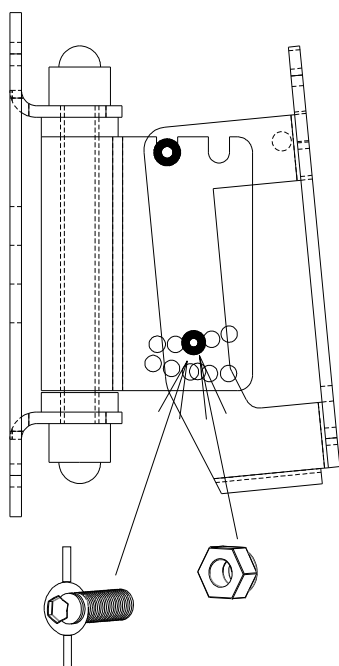
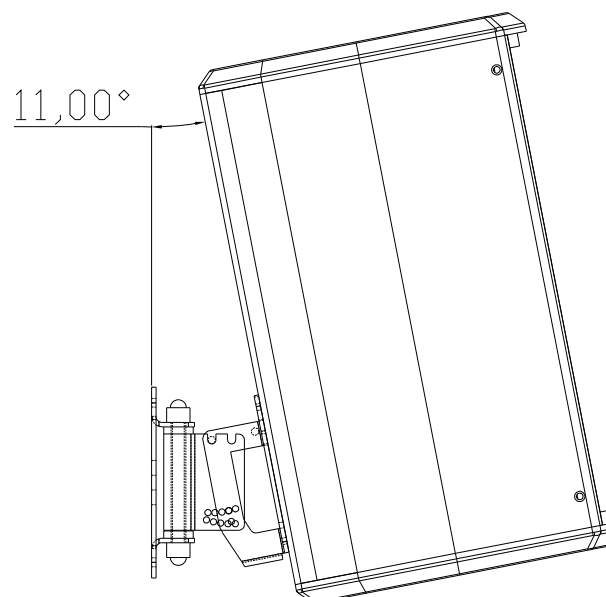
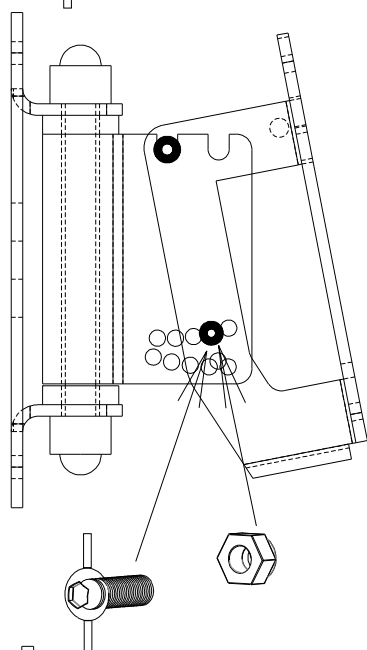
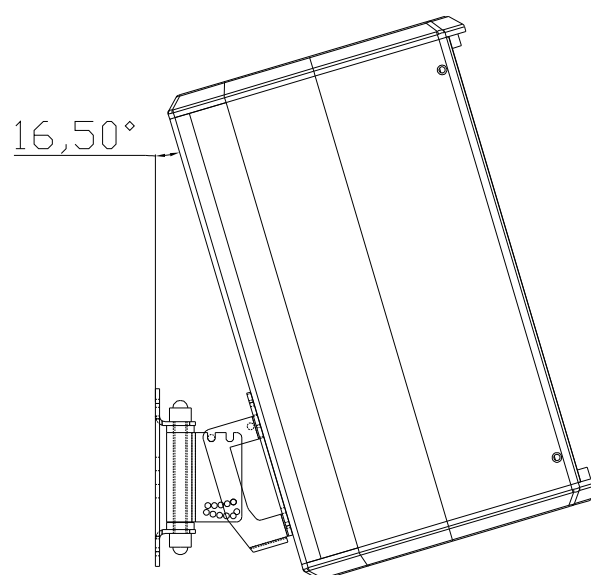
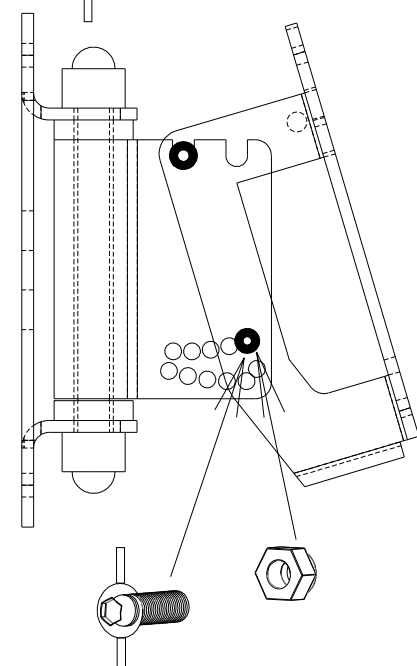
- Due to the weight of the enclosure, it will tilt towards the wall.
- ~ *Debido al propio peso de la caja acústica, el recinto se inclinará hacia la pared.*
- Choose the desired inclination and block the position with the locking screw (“C”) and the self-locking nut.
- ~ *Dar la inclinación necesaria y bloquear la posición con el tornillo de seguridad (“C”) y la tuerca autoblocante.*

0°



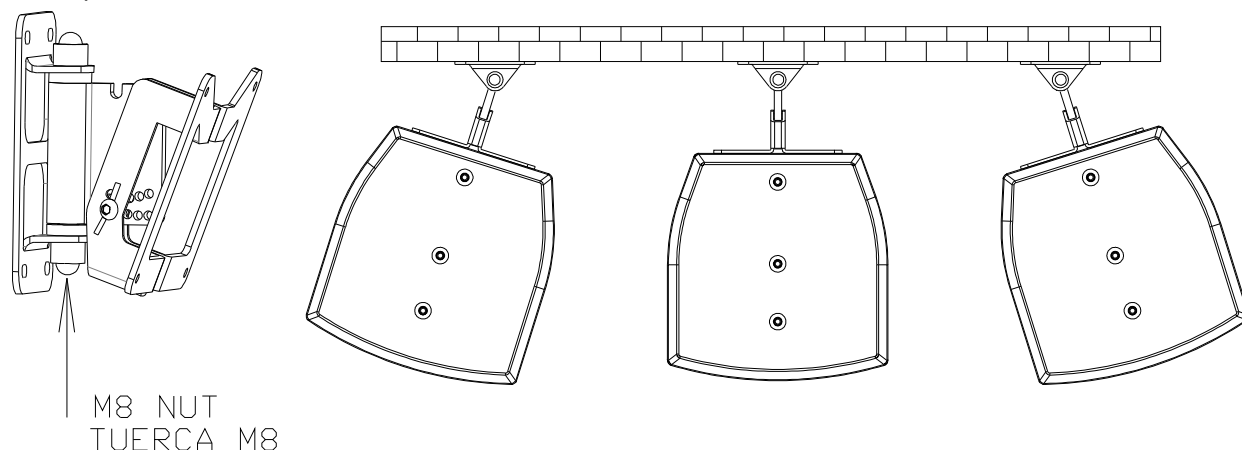
0°-5°-10°

**-15°****-20°****-5.5°**

**+5.5°****+11°****+16.5°**

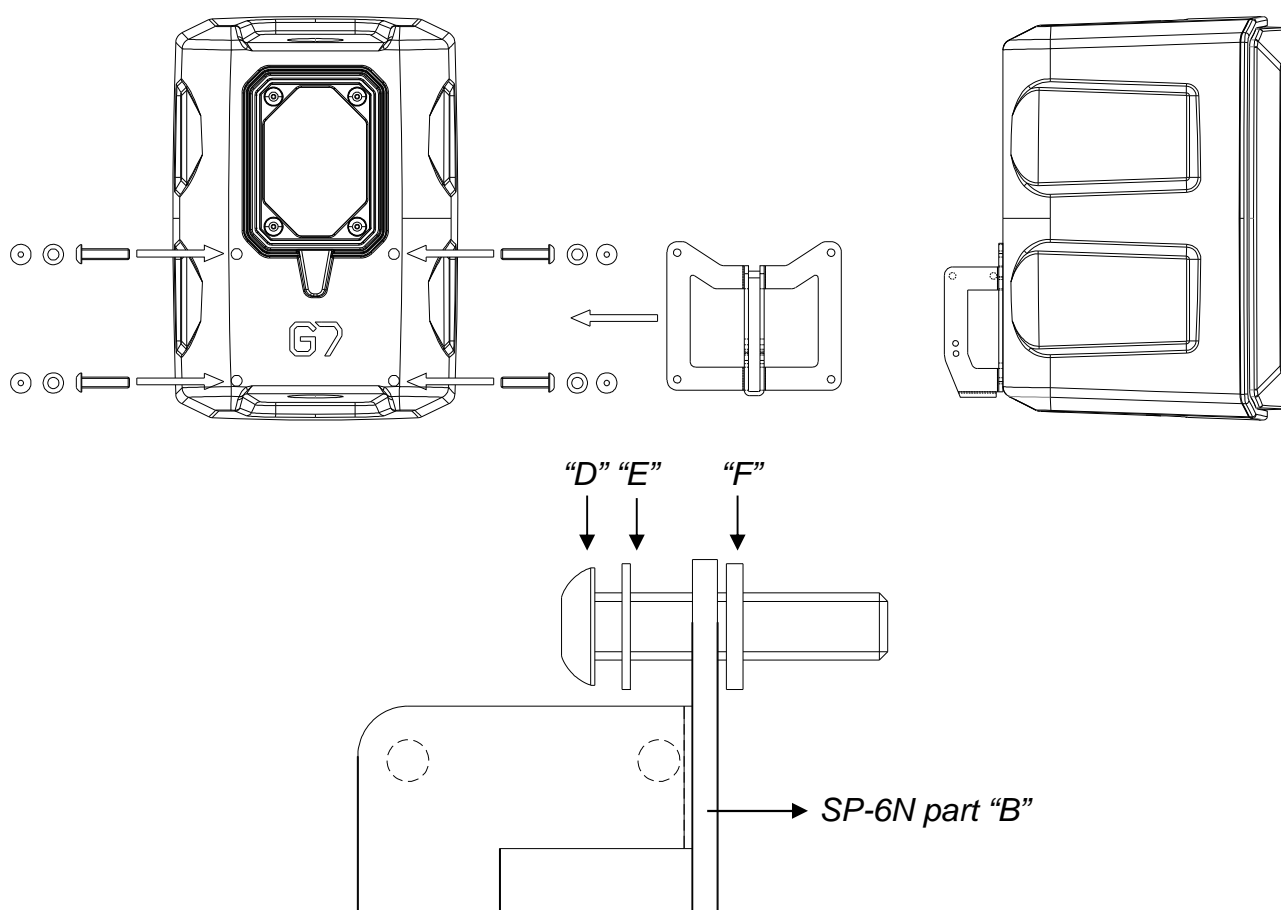


- Choose the desired horizontal inclination using the bottom M8 nut located in part “A” of the SP-6N bracket (unblock, choose angle, block again).
- ~ *Puede dar inclinación en el plano horizontal a través de la tuerca inferior de M8 situada en la parte “A” del soporte SP-6N (aflojar, escoger ángulo y volver a bloquear).*

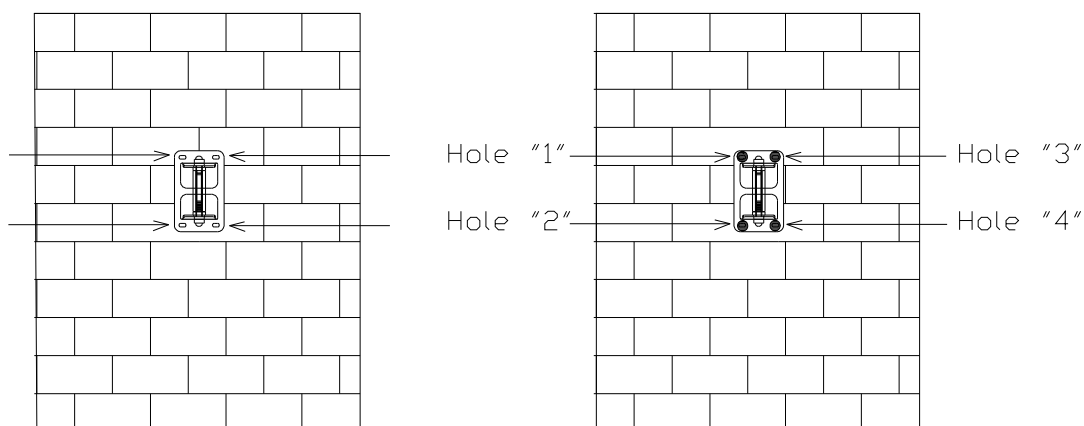


## G7

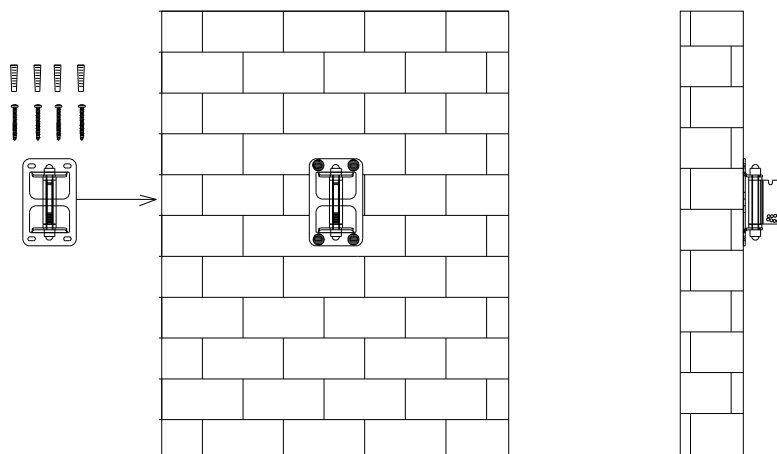
- Fix the part “B” of the SP-6N bracket using the four DIN7380 M4x20 screws (“D”), the four 4mm washers (“E”) and the four rubber washers (3x12x2mm) (“F”) that you will find in the kit.
- ~ *Fijar la parte “B” del soporte SP-6N a la caja mediante los cuatro tornillos DIN7380 M4x20 (“D”), las cuatro arandelas de 4mm (“E”) y las cuatro arandelas de goma (3x12x2mm) (“F”) suministradas en el “kit”.*



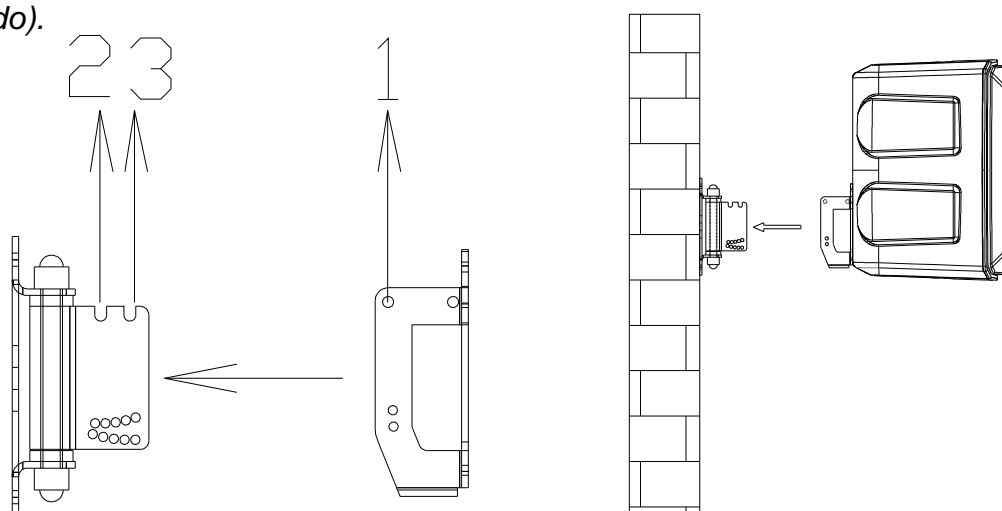
- Place the SP-6N bracket (part “A”) in front of the mounting surface, so you can mark the locations of the four mounting holes.
- ~ *Sítúe la parte “A” del soporte SP-6N cerca de la pared donde vaya a colgar la caja y marque la localización de los cuatro puntos de soporte.*



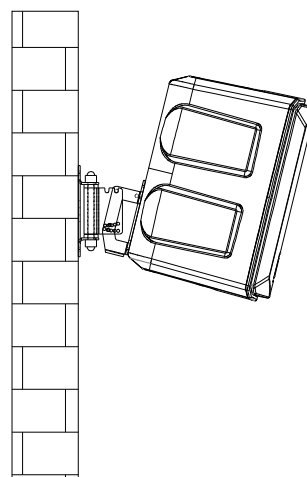
- Drill some corresponding pilot holes on the wall and fix the bracket using the wall plugs and the four DIN7505B 4x25 screws that you will find in the kit.
- ~ *Realice los taladros en la pared y cuelgue el soporte con tornillería adecuada y de alta resistencia (tacos y tornillos DIN7505B 4x25 suministrados en el “kit”).*



- Join the two parts of the bracket (A & B), placing the point “1” to “2” or “3” position (depending on the desired angle of inclination).
- ~ *Una las dos partes del soporte (A y B), colocando el punto “1” en la posición “2” o “3” (dependiendo del ángulo de inclinación deseado).*

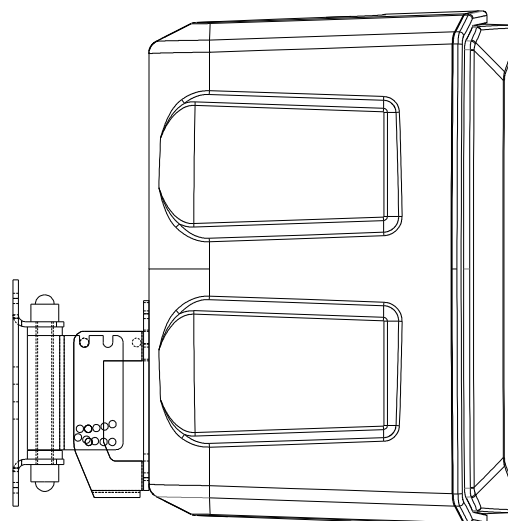
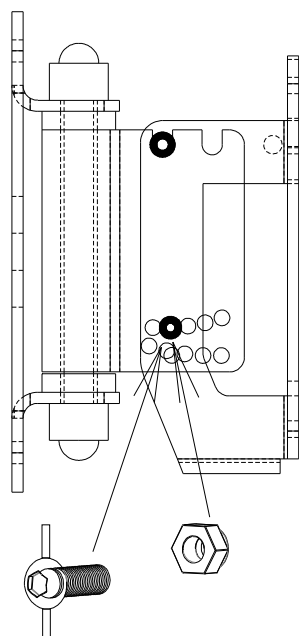


- Due to the weight of the enclosure, it will tilt towards the wall.
- ~ Debido al propio peso de la caja acústica, el recinto se inclinará hacia la pared.

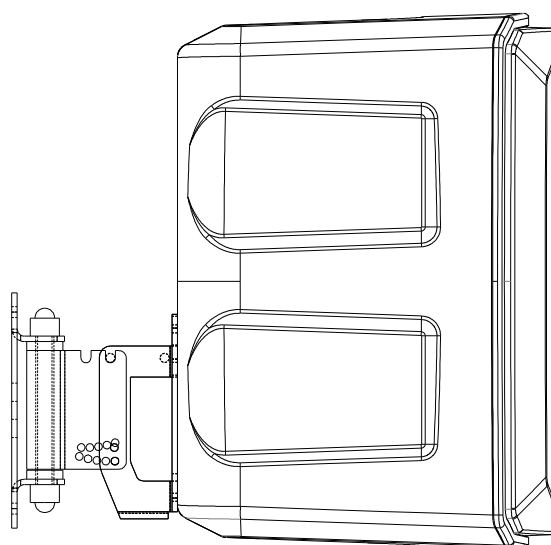
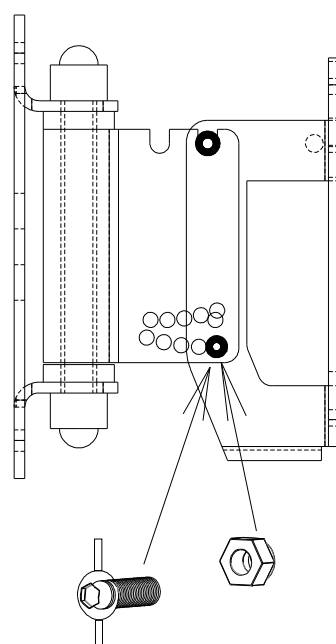


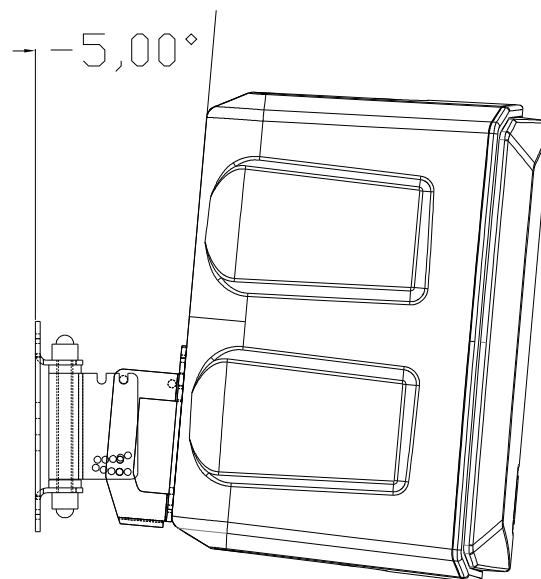
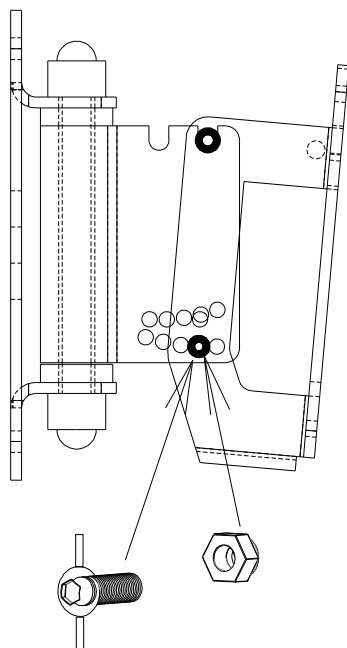
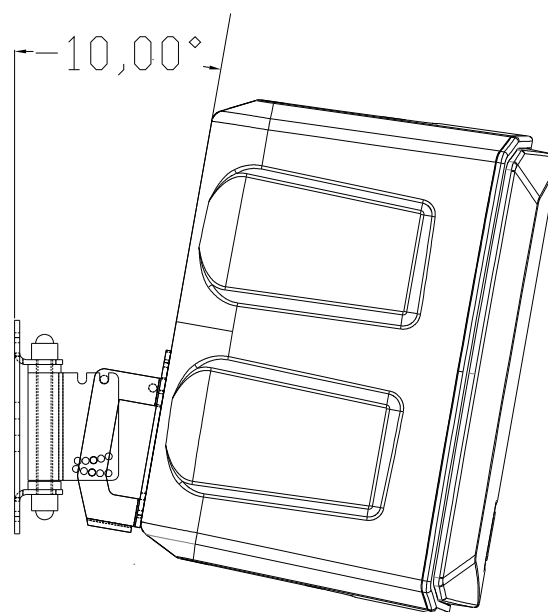
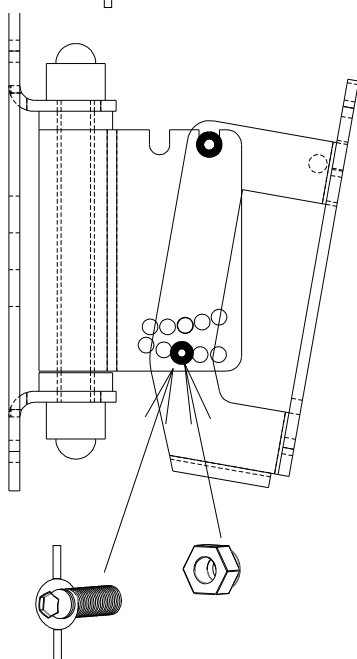
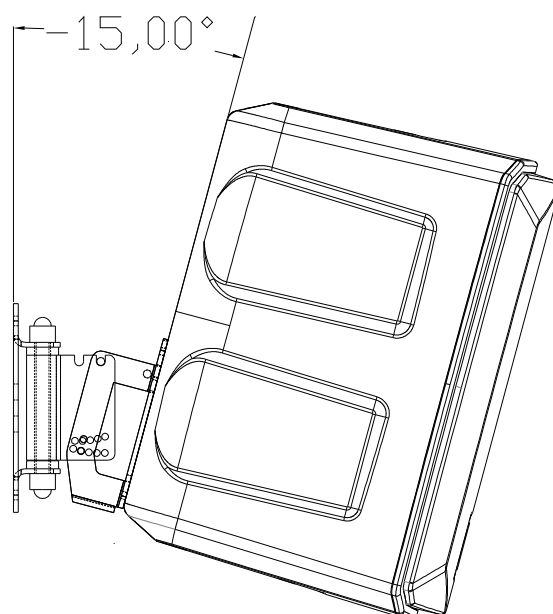
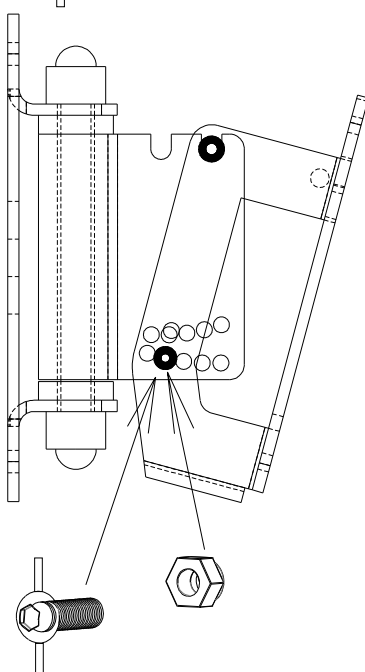
- Choose the desired inclination and block the position with the locking screw ("C") and the self-locking nut.
- ~ Dar la inclinación necesaria y bloquear la posición con el tornillo de seguridad ("C") y la tuerca autoblocante.

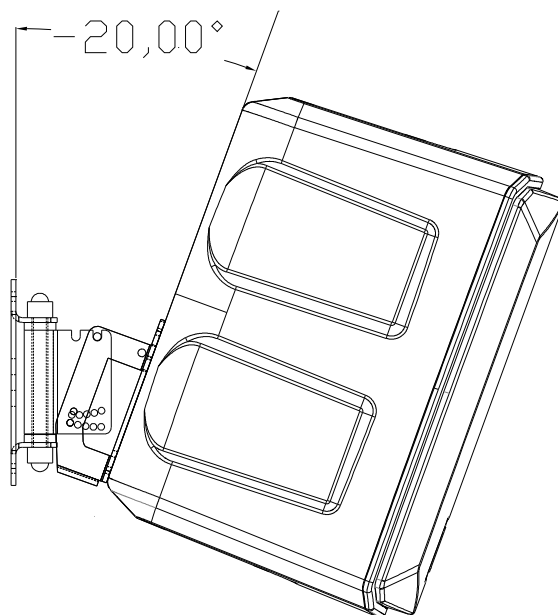
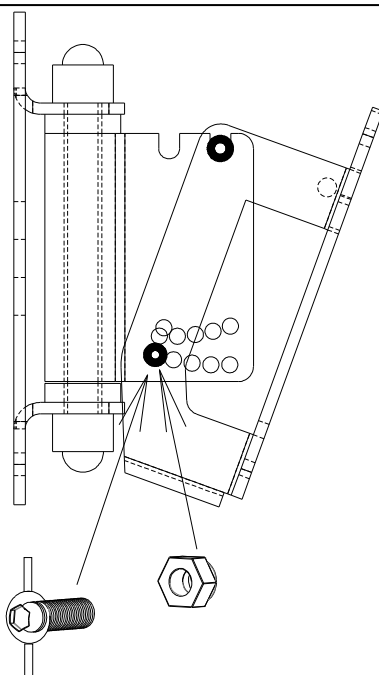
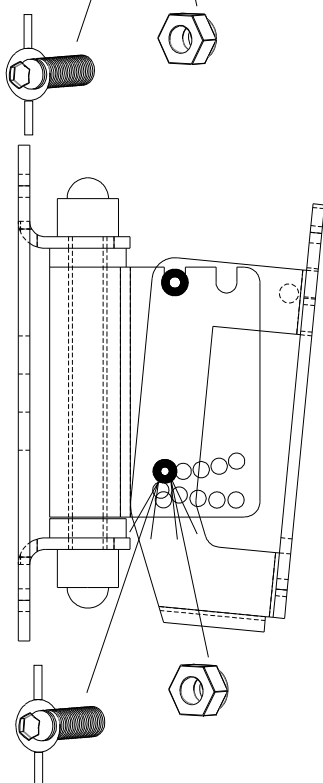
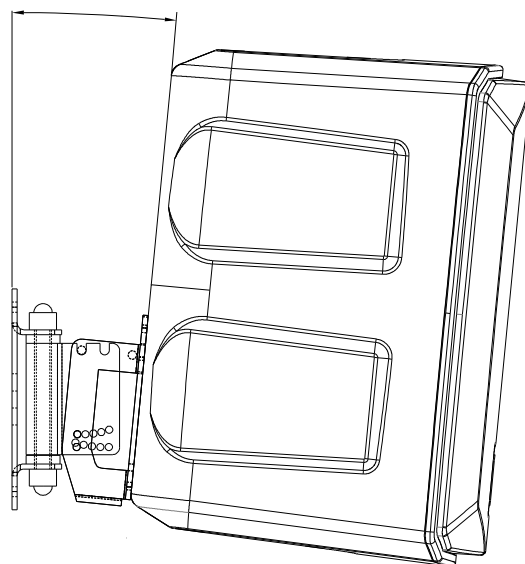
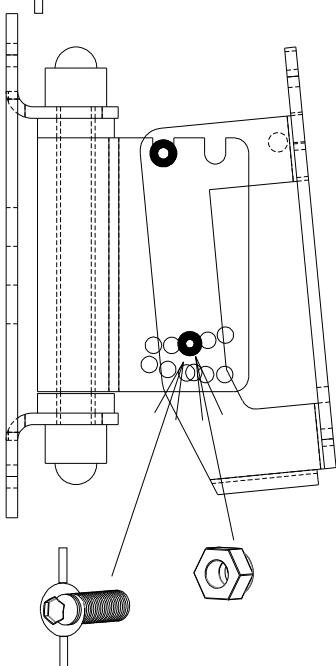
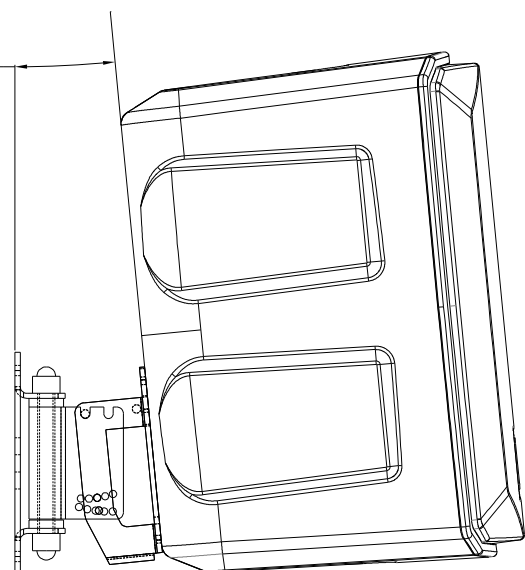
**0°**

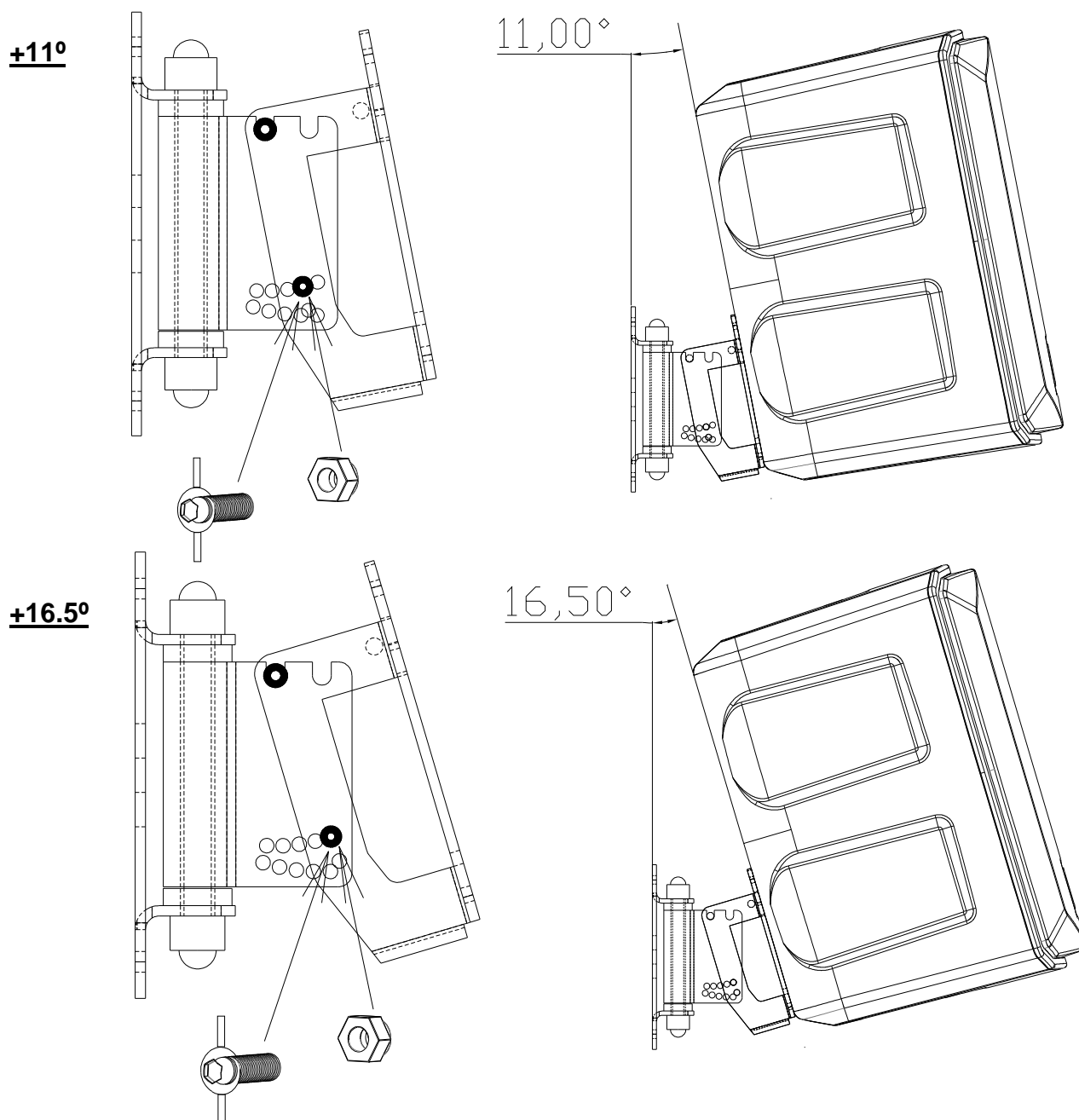


**0°**

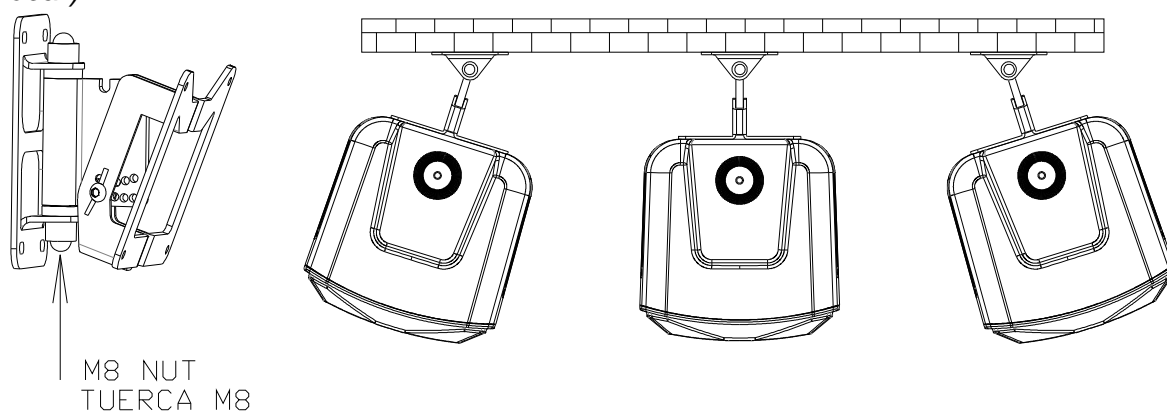


**-5°****-10°****-15°**

**-20°****-5.5°** $-5,50^\circ$ **+5.5°** $5,50^\circ$ 



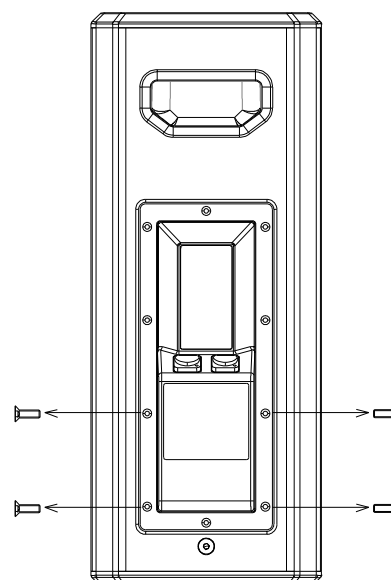
- Choose the desired horizontal inclination using the bottom M8 nut located in part “A” of the SP-6N bracket (unlock, choose angle, block again).
- ~ *Puede dar inclinación en el plano horizontal a través de la tuerca inferior de M8 situada en la parte “A” del soporte SP-6N (aflojar, escoger ángulo y volver a bloquear).*



## S26P / S26

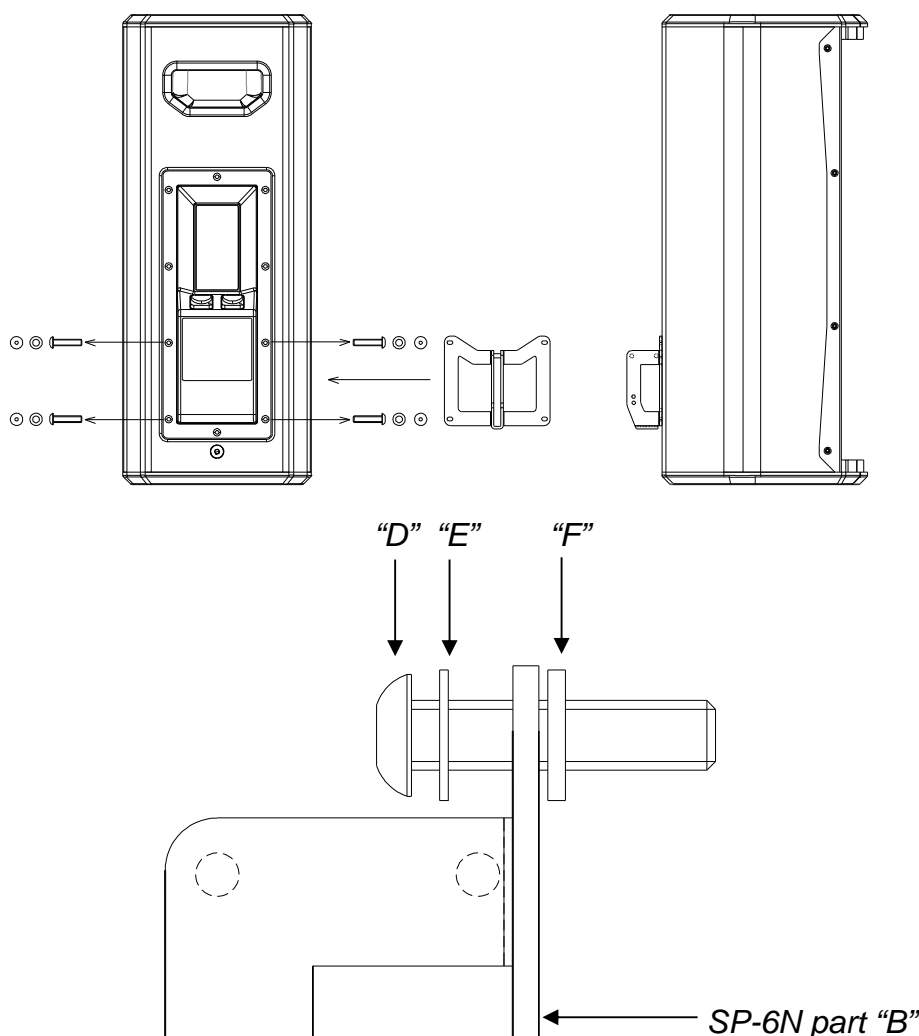
- Remove the four screws placed on the back plate.

~ *Quitar los cuatro tornillos del panel trasero*

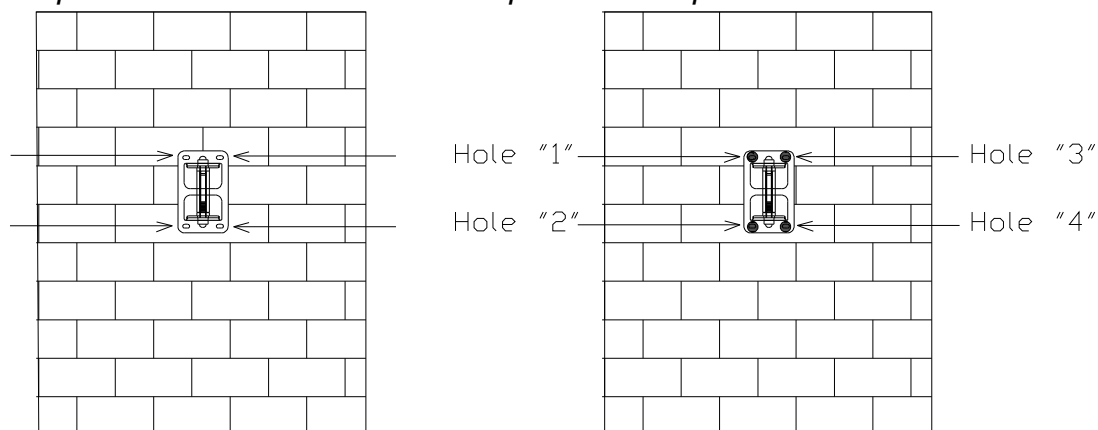


- Fix the part "B" of the SP-6N bracket using the four DIN7380 M4x20 screws ("D"), the four 4mm washers ("E") and the four rubber washers (3x12x2mm) ("F") that you will find in the kit.

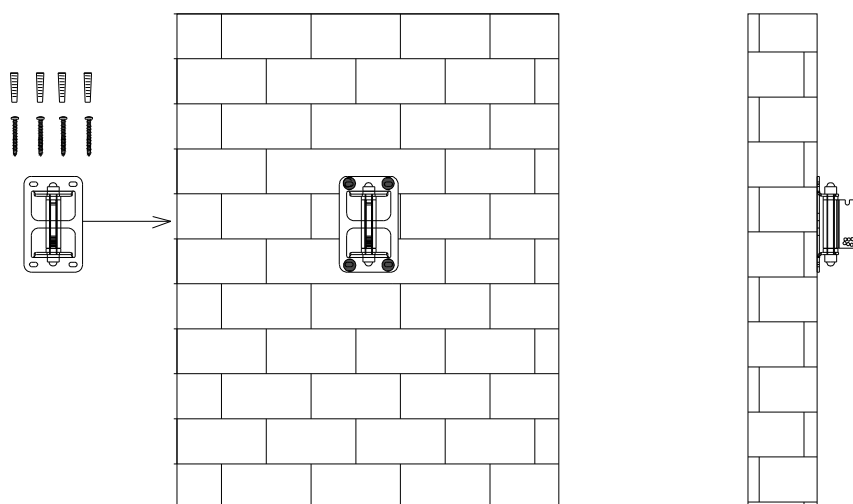
~ *Fijar la parte "B" del soporte SP-6N a la caja de madera mediante los cuatro tornillos DIN7380 M4x20 ("D"), las cuatro arandelas de 4mm ("E") y las cuatro arandelas de goma (3x12x2mm) ("F") suministradas en el "kit".*



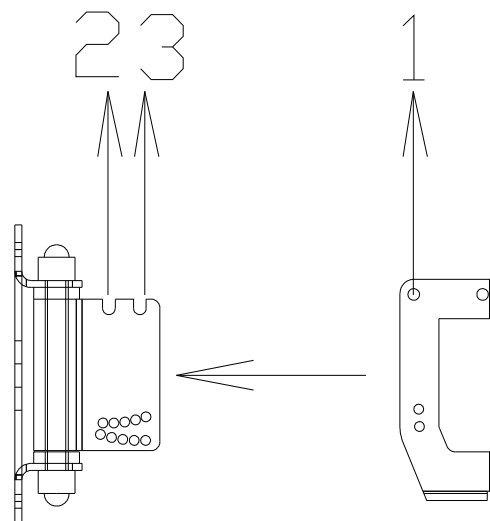
- Place the SP-6N bracket (part “A”) in front of the mounting surface, so you can mark the locations of the four mounting holes.
- ~ *Sitúe la parte “A” del soporte SP-6N cerca de la pared donde vaya a colgar la caja y marque la localización de los cuatro puntos de soporte.*



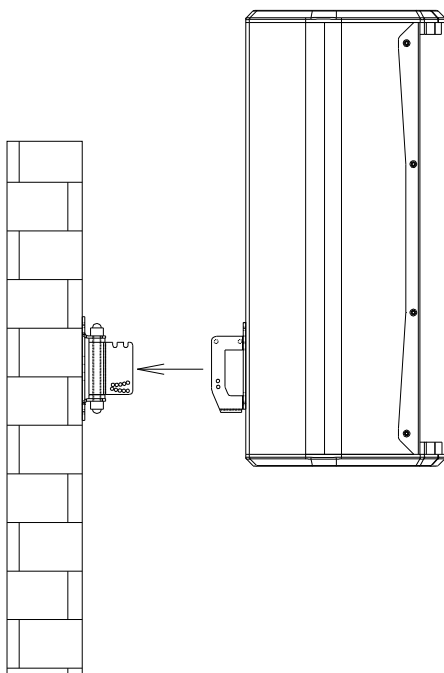
- Drill some corresponding pilot holes on the wall and fix the bracket using the wall plugs and the four DIN7505B 4x25 screws that you will find in the kit.
- ~ *Realice los taladros en la pared y cuelgue el soporte con tornillería adecuada y de alta resistencia (tacos y tornillos DIN7505B 4x25 suministrados en el “kit”).*



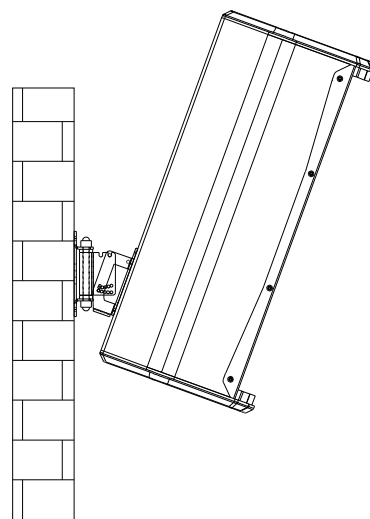
- Join the two parts of the bracket (A & B), placing the point “1” to “2” or “3” position (depending on the desired angle of inclination).
- ~ *Una las dos partes del soporte (A y B), colocando el punto “1” en la posición “2” o “3” (dependiendo del ángulo de inclinación deseado).*





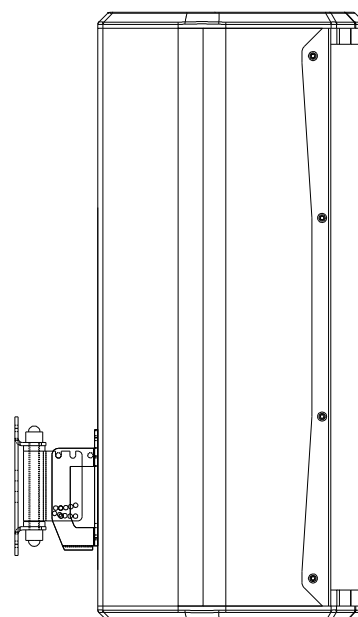
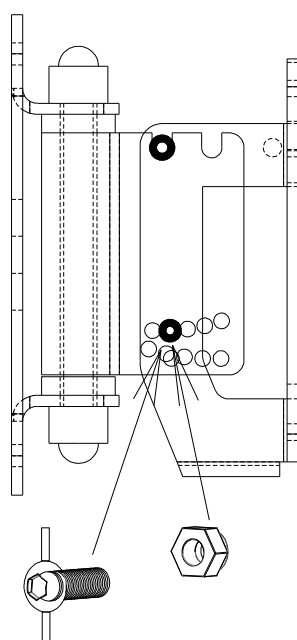


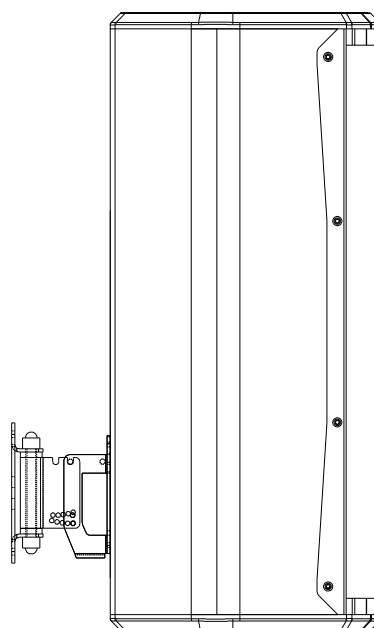
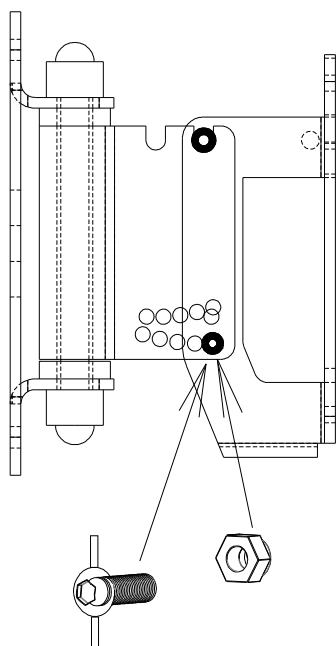
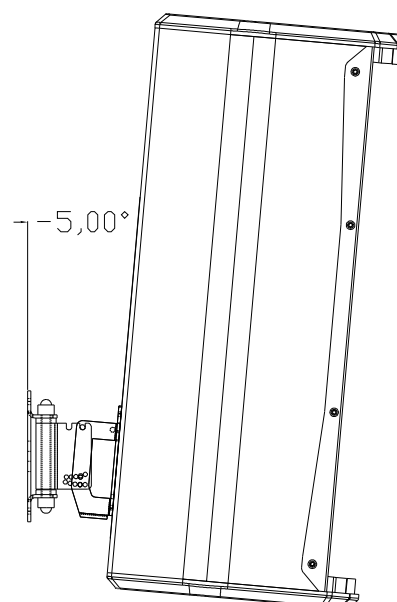
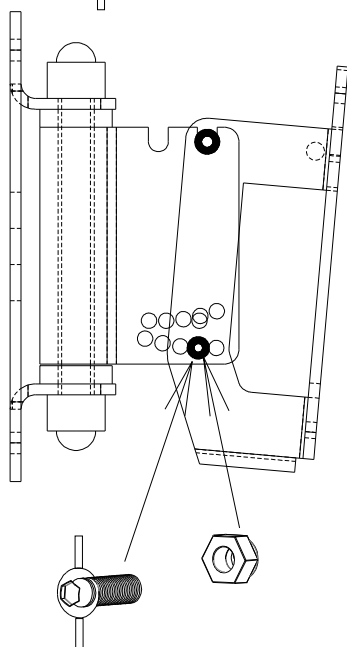
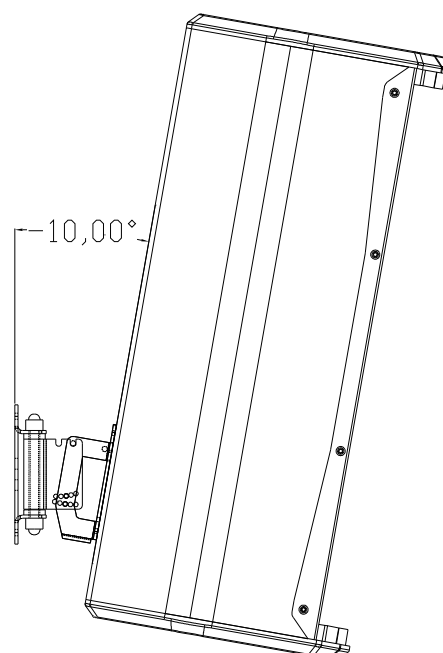
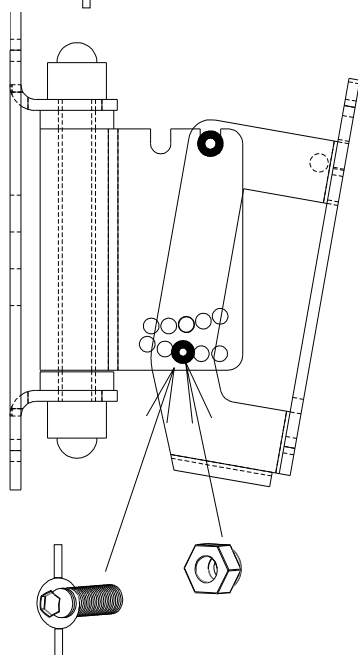
- Due to the weight of the enclosure, it will tilt towards the wall.
- ~ Debido al propio peso de la caja acústica, el recinto se inclinará hacia la pared.

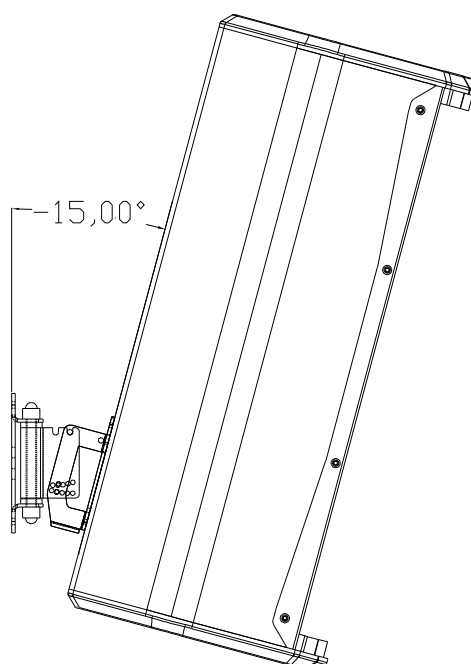
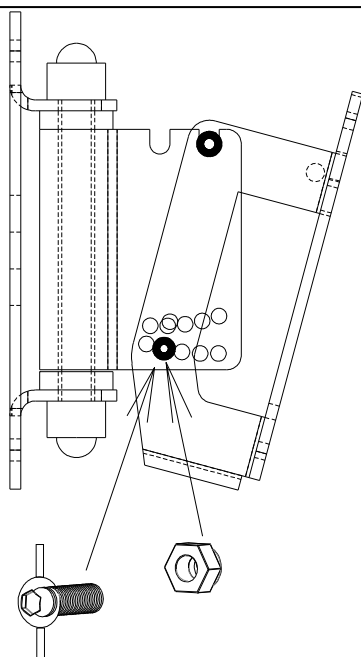
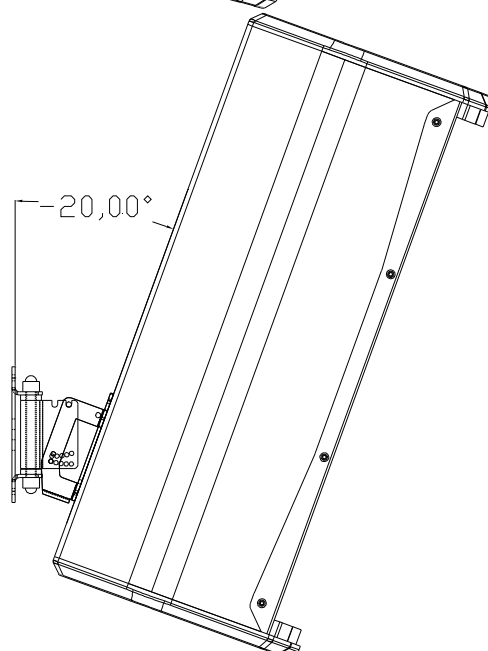
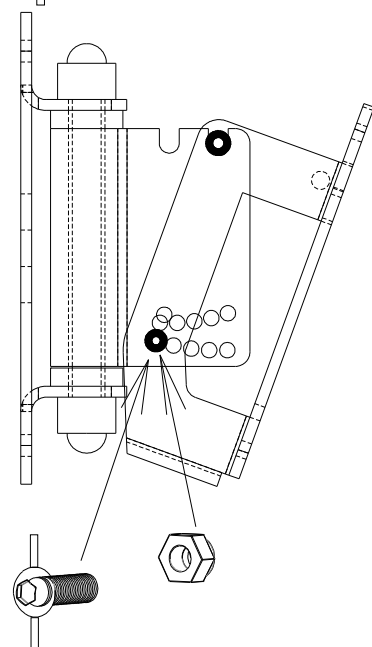
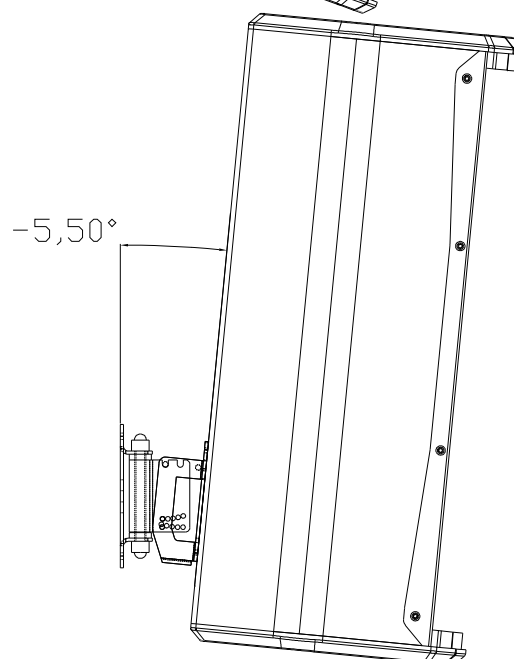
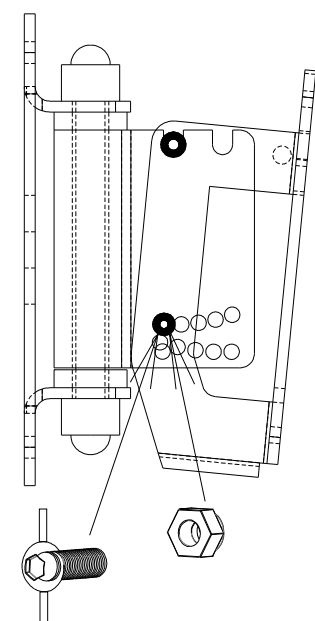


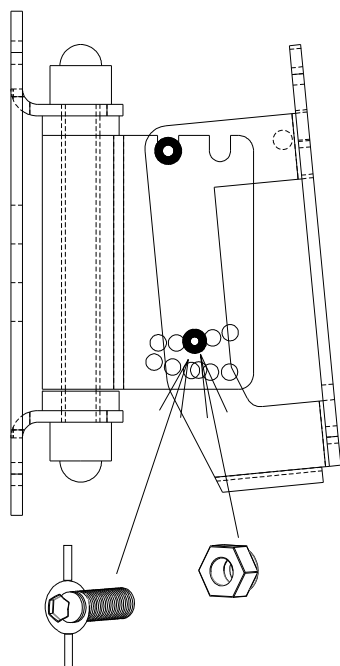
- Choose the desired inclination and block the position with the locking screw ("C") and the self-locking nut.
- ~ Dar la inclinación necesaria y bloquear la posición con el tornillo de seguridad ("C") y la tuerca autoblocante.

**0°**

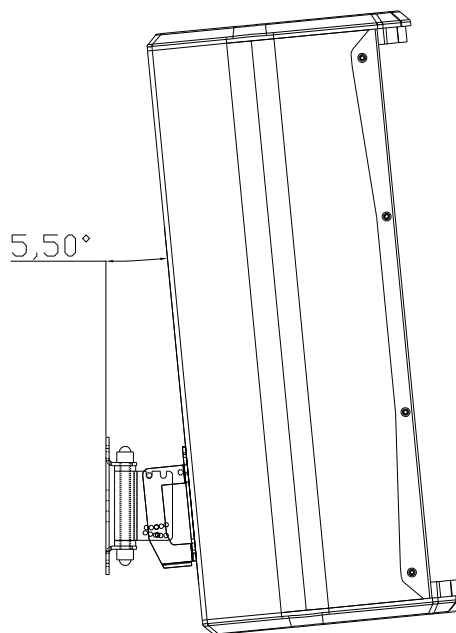
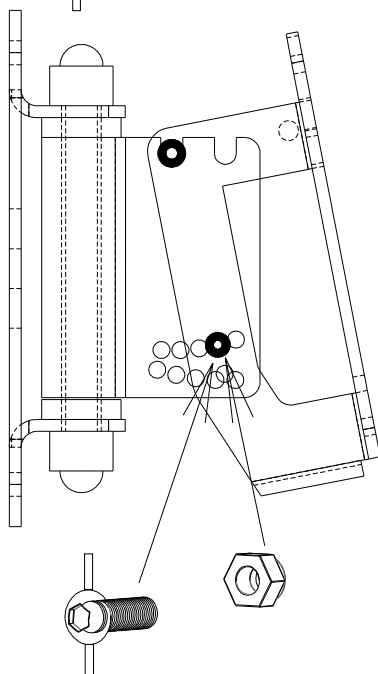


0°-5°-10°

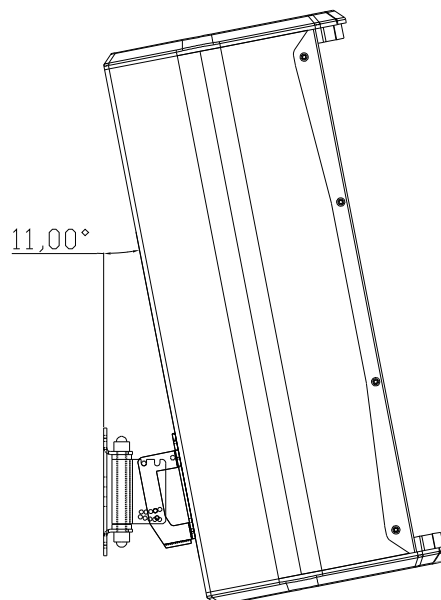
**-15°****-20°****-5.5°**

**+5.5°**

5,50°

**+11°**

11,00°



- Choose the desired horizontal inclination using the bottom M8 nut located in part “A” of the SP-6N bracket (unlock, choose angle, block again).
- ~ *Puede dar inclinación en el plano horizontal a través de la tuerca inferior de M8 situada en la parte “A” del soporte SP-6N (aflojar, escoger ángulo y volver a bloquear).*

